



HELPING  
PARTNERS  
MODERNIZE  
FASTER

**Metro**  Sky

PBL Tower (13th floor),  
17 (new) Gulshan North C/A  
Dhaka 1212, Bangladesh

Phone: +8809612341602  
Web: [www.metro.sky.co](http://www.metro.sky.co)



# ABOUT US

MetroSky is a fully automated cloud service platform launched by MetroNet Bangladesh Limited. It brings buyers and sellers to conduct business on a single platform. Rather than building out a comprehensive and multi-layered infrastructure, resellers can leverage the pre-built, flexible platform to purchase, provision, manage and invoice technology solutions for their end-user customer.

MNBL started its journey in 2001 as the country's first ISP to use End-to-End optical fiber. At present, we are able to connect you to virtually anywhere in the globe with point-to-point or multipoint connectivity offering different services such as dedicated internet access, data transmission, network managed service support by our experienced & certified professionals trained in understanding the respective data transmission environment, including local / international, regulations and procedures.

MetroSky makes it really easy to deploy, run and scale applications. Set up an environment in few seconds; deploy, scale, install and integrate add-ons in a snap. Focus on your job, deliver faster, work happier.



# FOR WHOM AND HOW

As a cloud and network services provider, we understand that reliable and affordable connectivity is key to leverage the Data Center and cloud investments made by organizations.

From our Data Center & large nationwide network coverage, we provide high-speed multi-protocol low latency networks. MetroSky Providing 99.98% uptime.

MetroSky offers Managed ITES Services for CPs, MNCs, Group of Companies, SMBs, Software companies, Bank & Financial Institutions & NBFIs.

Though service-oriented architecture "Everything as a service" MetroNet provide "services" according to different models, Infrastructure as a Service (IaaS), Platform as a Service (PaaS), and Software as a Service (SaaS).



# Advantage

Our vast and constantly growing footprint spans in 64 districts maintaining 350 plus Points of Presence (POPs) across the country partnering with Telco and NTTNs. We can transport profitable services in a consistent and reliable manner, providing a high quality of experience to an entirely new generation of subscribers. Our network supports the bandwidth and network requirements for any organization small, medium or large.

Cisco UCS, DELL Blade servers and SSD storage guarantee performance and reliability and also allow a true high performance, enterprise architecture without any compromise.

Built on a massively redundant architecture with no single point of failure, multiple clustered hardware and high-end blade servers, we have leveraged our know-how in delivering a platform designed to scale and grow while maintaining industry leading uptime.

A fully redundant Cisco UCS and DELL network links all nodes providing blisteringly fast network throughput, internet access and storage access.



# MetroSky Services

## Co-location Service

Relying on MetroSky data center allows you to eliminate the capital expenditures (CAPEX) of building and maintaining your own facility while allowing you to retain ownership and complete control of your physical servers.

## Dedicated Server Service

Dedicated servers are the cornerstone of your IT infrastructure. They are a vital component of any IT solution. Enjoy an environment that is 100% devoted to your business' application and software. Completely customize your server's hardware with the vast array of resources that we provide. Performance, power, and flexibility is just a mouse click away.

## Back up as Service

Access your data from nearly anywhere in the world using cloud storage, a secure and easy way to store, access, and protect your data via our high-speed network. Our secure servers are stored in data center which feature ultra-redundant power and networking systems with no single point of failure. They are monitored 24X7X365 days a year to ensure no harm comes to the servers or files stored.

## Cloud Service

On-demand availability of computer system resources, especially data storage and computing power, without direct active management by the user. Large clouds, predominant today, often have functions distributed over multiple locations from central server.

# Data Center Details

## Data Center Standard

Tier III (concurrently maintainable)

## Power

Guaranteed 99.98% availability as standard SLA. N+1 redundancy and skilled operators ensure reliable operations.

## Generator

Redundant configuration with N+1 or 2N. 72-hour continuous operation without refuel

## UPS

Redundant configuration with N+1 or 2N

## Power Provision

Dual power feeds from different PDUs

## Air-conditioning

Highly efficient cooling systems, specifically for ICT equipment with N+1.

## Fire Protection

Early warning smoke detection system and FM200 gas suppression systems.

## Security

Monitoring cameras and our security policy, ensures paramount security practices.

## Connectivity

Large-bandwidth connectivity is available through our strong network backbone. Also available are seamless bundle solutions, comprised of various network services.

## Standard Rack

42U

## Operation

24 X 7 X 365

## NOC Service Desk

24/7 support (English and local language)



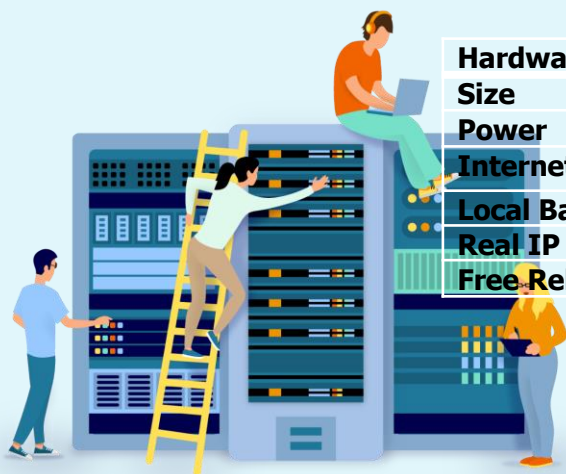
# Co-location Service

Relying on MetroSky data center allows you to eliminate the capital expenditures (CAPEX) of building and maintaining your own facility while allowing you to retain ownership and complete control of your physical servers.

As the fast pace of business and technology requires cloud providers and digital businesses to respond quickly to changes, long-term data center contracts are no longer convenient. Start Direct Cabinet is designed to scale with you as your needs evolve. Ideal for any business with unique data center needs.

Our facilities are carrier-neutral with datacenter specialists ready to assist you and prove a customized turnkey colocation service. Be assured that your server uptime is best in class and without compromise.

| Hardware                  | Network      | Server / Storage  | Dedicated Rack |
|---------------------------|--------------|-------------------|----------------|
| <b>Size</b>               | 1U / 2U / 3U | 1U / 2U / 3U / 4U | 42U            |
| <b>Power</b>              | As required  | As required       | 2-7 KW         |
| <b>Internet Bandwidth</b> | N/A          | 02 – 10 Mbps      | 10 – 100 Mbps  |
| <b>Local Bandwidth</b>    | YES          | YES               | YES            |
| <b>Real IP</b>            | N/A          | /30               | /30            |
| <b>Free Reboot</b>        | YES          | YES               | YES            |



# Dedicated Server

Dedicated server literally dedicated to your own personal use. You'll have rights to all of the resources of the machine, and you'll be able to configure the hosting environment however you wish. Dedicated Server are usually only worth while if you're receiving over 500,000 visitors per month and have the necessary technical staff to maintain and optimize your server.

There is no right and wrong when it comes to hosting. Instead, it simply depends upon what's the best choice for your applications. We all have different needs. So make sure you take stock of what kind of server support you'll need before you choose a application.

However, since dedicated servers are almost always more expensive it's generally a good idea to start with a VPS until your company is generating enough revenue to support the cost of a dedicated server.

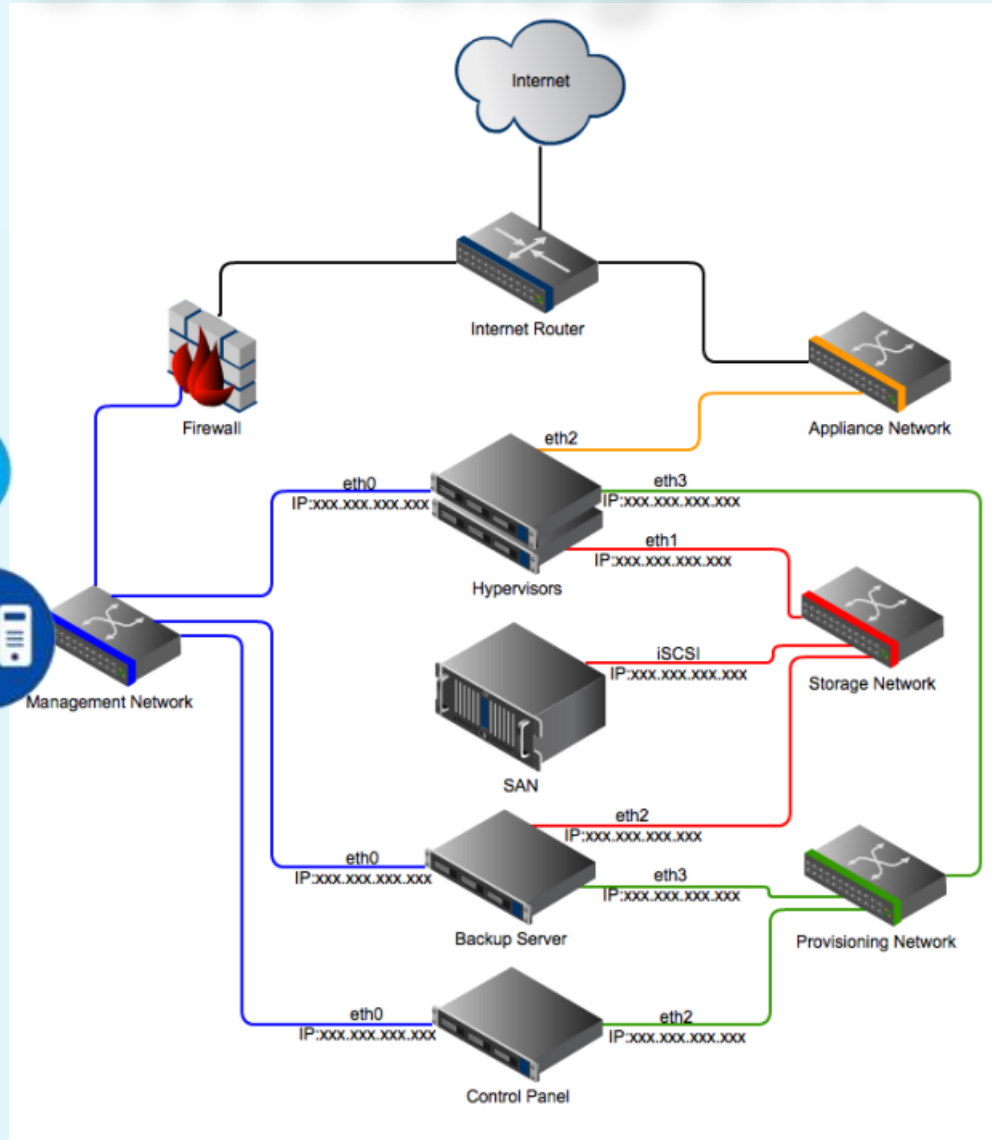
## Dedicated Server Options

Processor: 4Core - 24Core ;  
DC location: Dhaka, Bangladesh  
RAM: 16GB - 128GB ;  
HDD: 1TB - 4TB ;  
Bandwidth: 05Mbps - 100Mbps ;  
BDIX: Yes ;  
H/W RAID: Yes ;





# MetroSky Cloud Diagram





# MetroSky Cloud Features

## Resources Pooling

It means that the Cloud provider pulled the computing resources to provide services to multiple customers with the help of a multi-tenant model. There are different physical and virtual resources assigned and reassigned which depends on the demand of the customer. The customer generally has no control or information over the location of the provided resources but is able to specify location at a higher level of abstraction.

## On-Demand Self-Service

It is one of the important and valuable features of Cloud Computing as the user can continuously monitor the server uptime, capabilities, and allotted network storage. With this feature, the user can also monitor the computing capabilities.

## Easy Maintenance

The servers are easily maintained and the downtime is very low and even in some cases, there is no downtime. Cloud Computing comes up with an update every time by gradually making it better. The updates are more compatible with the devices and perform faster than older ones along with the bugs which are fixed.

## Large Network Access

The user can access the data of the cloud or upload the data to the cloud from anywhere just with the help of a device and an internet connection. These capabilities are available all over the network and accessed with the help of internet.



# MetroSky Cloud Features

## Availability

The capabilities of the Cloud can be modified as per the use and can be extended a lot. It analyzes the storage usage and allows the user to buy extra Cloud storage if needed for a very small amount.

## Automatic System

Cloud computing automatically analyzes the data needed and supports a metering capability at some level of services. We can monitor, control, and report the usage. It will provide transparency for the host as well as the customer.

## Economical

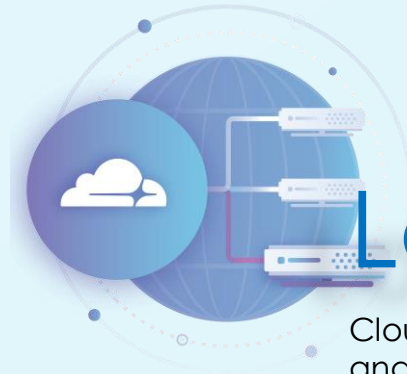
It is the one-time investment as the company (host) has to buy the storage and a small part of it can be provided to the many companies which save the host from monthly or yearly costs. Only the amount which is spent is on the basic maintenance and a few more expenses which are very less.

## Security

Cloud Security, is one of the best features of cloud computing. It creates a snapshot of the data stored so that the data may not get lost even if one of the servers gets damaged. The data is stored within the storage devices, which cannot be hacked and utilized by any other person. The storage service is quick and reliable.

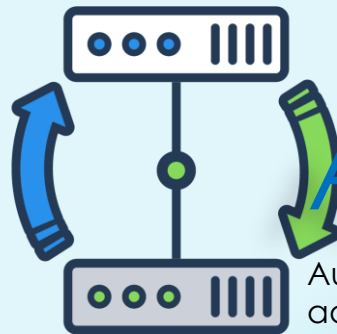
## Pay as you go

In cloud computing, the user has to pay only for the service or the space they have utilized. There is no hidden or extra charge which is to be paid. The service is economical and most of the time some space is allotted for free.



# Load balancing

Cloud load balancing is the process of distributing workloads and computing resources in a cloud computing environment. Load balancing allows enterprises to manage application or workload demands by allocating resources among multiple computers, networks or servers. Cloud load balancing involves hosting the distribution of workload traffic and demands that reside over the Internet.



# Auto Failover

Automatic failover is a resource that allows a system administrator to automatically switch data handling to a standby system in the event of system compromise. Here, automatic describes the failover process. By definition, most failover processes are programmed to operate automatically.



# Virtualization Platform



THANK YOU!