

www.linespay.com



LinesPay
convenient people management

Technology

Web Based

LinesPay is developed using the latest web 2.0 technology that recognized by technology inventors and users world wide. Current world assume these technologies will last and update for next century. Tool used in LinesPay development are Python, SQLAlchemy and jQuery.

Desktop Enabled

Though LinesPay is developed using the web technology but it is also provides desktop client interface facility for desktop based users. Tools used in desktop interface development are Qt and PyQt.

Mobile Compatibility

iPhone OS, Android, Windows Mobile

Database

MySQL preferred, Oracle (On demand)



Technical Specifications

Server

- RHL / CentOS (64 bit)
- 3 GHz 4 Core* Processor
- 8 GB* RAM (Depends on user)
- 128 GB SSD

Client

- 1024 X 768 minimum screen resolution
- Web browsers
(Mozilla Firefox/Chrome/Opera/Safari)



HR management system is a vital part for an organization thus LinesPay is high configurable to make better strategic business policies and provide the finest control over your employees & payroll management. Its inherent work-flow processing that will help your organization to move in a dynamic and intelligent way. It deals with the financial aspects of employee's details, attendance & leave management, salary disbursement with payroll items & pay scale settings, pay formula definition, allowances, schedule & unscheduled payment, advance wages, loan calculation, automatic deduction of provident fund/Income tax from monthly salary etc. Automatic payslip generation and all advance report generation makes the software very computable. Furthermore, if you are not accustomed with the features we are currently providing, our IT professionals are well qualified to provide you additional features, just for your business needs. It can be customized and upgraded easily to meet the needs of organizations of any dimension. It is very high authenticable, secure and user friendly. Finally, if you are looking for a cost-effective, efficient, quality solution for your organization LinesPay will be the best choice.

Modules

- Personal Information Management
- Attendance and Leave
- Payroll Management
- Loan & Advance
- PF & Gratuity
- Recruitment and selection
- Performance appraisal
- Employee Asset
- Final settlement
- HR cost center

Industry Expertise

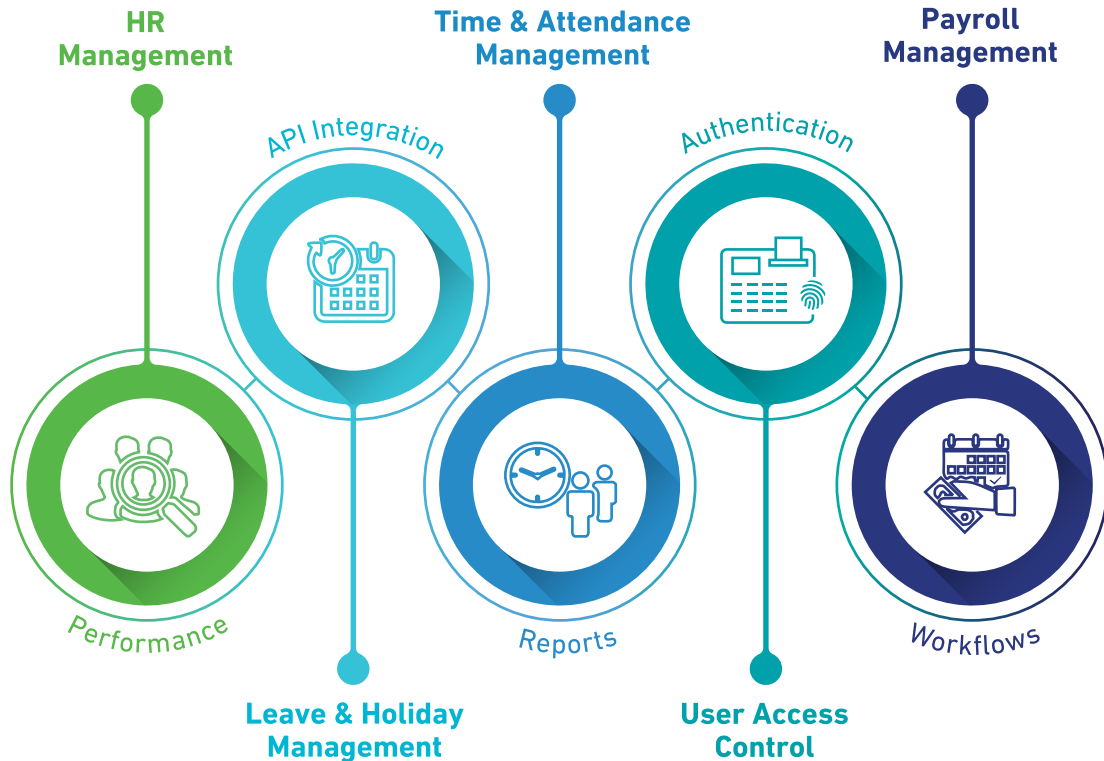
- Manufacturing
- Trading
- Buying Houses
- RMG Industry
- Pharmaceuticals
- Departmental Stores
- Financial Organization
- Banking and Finance
- Hotel & Restaurant
- Real Estate Companies
- Transport ation
- Companies
- IT Companies
- Educational Institute
- Travel Agency
- NGO et c.

Benefits

- ◆ Web based, user friendly and cost effective
- ◆ Quick Start feature and easy to set up & understand
- ◆ Program default information minimizes user input requirements
- ◆ Reducing processing time and labour
- ◆ Provides real-time gross-to-net calculations
- ◆ Accommodates any combination of incomes, deductions, benefits, and leaves
- ◆ Offers consolidated entry screen for quick payroll entry
- ◆ Support up to an unlimited number of employees
- ◆ Supports Direct Deposit
- ◆ Schedule start dates of employee benefits and set effective dates for any payroll benefit feature
- ◆ Enter payroll by hours, rates and pieces, on a daily basis or when needed
- ◆ Attach documents, files, images and locations to any Employee File
- ◆ Optionally process common specific state payroll forms like unemployment, new hire and others
- ◆ Exports Payroll Data
- ◆ Detail paychecks and vouchers
- ◆ Uninterrupted online and onsite support



F low of Modules



An industry-leading, flexible, scalable and comprehensive HRM solution, LinesPay help organizations optimize HR business processes as well as maximize Return on Employee Investment. LinesPay successfully meet and responds to the HR management challenges faced every day in the areas of payroll, benefits, employee self-service, attendance, recruiting, training, workforce analytics and more. By automating and streamlining day-to-day HR business processes using LinesPay, organization and its staffs are freed up to spend more time and energy on the business asset that is most vital.

Features



Personal Information Management

- Employment Information
- Document Management
- Qualification & Specialization
- Employee Ledger



Time and Attendance

- 24 Hours Shifting
- Overtime Management
- Late Management
- Duty Rostering



Payroll Management

- Dynamic Reward & Deduction
- Role-Based Taxation
- Role-Based Bonus Config
- Job Location Dependency



Loan and Advance

- EMI-Based Salary Loan
- Auto Adjustment with Payroll
- Configurable Loan Setup
- Self Loan Application



PF and Gratuity

- Members Details Information
- Role-Based Profit Distribution
- Interest-Based PF Loan
- Lapses Fund Handling



Leave and Holiday

- Carry Forward & Encashment
- Email Notification
- Multi Approval System
- Holiday Policy Assignment



F eatures



Performance Appraisal

- 360-degree appraisal system
- Criteria-wise rating system
- Weightage Evaluator
- Commenting on Appraisal



Employee Asset Management

- Asset Assignment
- Asset Tracking
- Requisition & Return
- Approval on Release



Final Settlement

- Segment of Settlements
- High Calculation Intelligence
- Instant PF & GF Calculation
- Multi-layer verification



Recruitment and Selection

- Manpower Status
- Job Requisition & Posting
- Smart Selection Panel
- CV Bank



Training Management

- Training Requisition
- Training Logistics
- Training Scheduling
- Training Budget



Piecework Management

- Task Assignment
- Rate Assignment
- Resource Allocation
- Piece-rate calculation

Features



HR Cost Center

- Budget
- Expense
- Variance
- Trend



Tax Management

- Role-Based Taxation
- Tax Slab
- Flat Tax Deduction
- Auto Deduction with Payroll



Employee Specialization

- Unit of Measurements
- Specialization Types
- Specialization Category
- Terms of Specialization



BGMEA Compliance

- Multilingual Reporting
- Labor Status Visibility
- Dynamic Attendance
- Consecutive Absent Analysis



Security and Access Control

- Multiple Access Level
- RBAC System
- Branch wise user assignment
- Multi-Layer authentication



Additional Features

- Analytical Dashboard
- Multi Branch Management
- Android App
- Location Tracking
- Cloud Backup Provision

T Training

One of the keys for successful implementation of LinesPay is its ample training plan. This is aimed to increase our clients' proficiency and utilizing LinesPay on a daily basis. We make training exciting for your staff and maximize their retention with hands-on-training

We provide several levels of training for successful implementation of LinesPay i.e.

- Online training
- Onsite training at client premises
- Onsite training at Divine IT premises
- PrismERP Certification Training

Our qualified trainers provide both generic and tailored training to fit your business needs and ensure your staffs are able to maintain and use our LinesPay fully. You can also utilize out traning team by contacting over phone or by email.

D Device Integration

Different types of device from any location can be integrated & data can be automatically retrieved by LinesPay.

LinesPay supports

- Biometric Device
- Android Device
- Proximity Card Reader
- Pass Code Reader
- Mifare Card Reader





Custom Support

LinesPay service and support teams are dedicated to provide supreme level of personalized service to clients, ensuring you gain a return on investment from your HR and Payroll Software. That is why we introduced different methods of support packages

SERVICE	BASIC	STANDARD	PLUS	PREMIUM
Support Availability	Sunday – Thursday 10.00am-5:00pm BST	Sunday – Thursday 10.00am-6:00pm BST	Sunday – Thursday 10.00am-8:00pm BST	Sunday – Thursday 9.00am-9:00pm BST
Ticket Reply	First Come, First Service	Reply in 24 Hours	Reply in 6 Hours	Reply in 3 Hours
Documentation Website	Available	Available	Available	Available
24/7 Emergency Support	X	X	✓	✓
Bug Fixing Updates	X	✓	✓	✓
Version Updates	Same Version	Same Version	Same Version	Upto Next Major Version
Designated Support Manager	X	X	X	✓
Assistance to ERP Admin	✓ (Limited Time)	✓ (Limited Time)	✓ (Limited Time)	✓ (Limited Time)
Onsite Support	X	X	✓ (Separate Quote)	✓ (Separate Quote)
Training	Resources	Online, Offline at PrismERP HQ (Limited Time)	Online, Offline at PrismERP HQ (Limited Time)	Online, Offline at PrismERP HQ (Limited Time)
Process Analysis	X	X	✓ (Limited Time)	✓ (Limited Time)

Support

Quality customer support is the hallmark of LinesPay. By providing professional and quality service to our clients, LinesPay professionals and dedicated experts will aim to exceed clients' satisfaction. We never keep ourselves within any limit just to understand our customers, but also caring how effectively they are implementing their HR & Payroll and attendance system

We provide several support and service options to keep our clients up to date for developing their IT infrastructure

Contacts

Phone	+ 880 2 55085054, + 880 2 55085470
Fax	+ 880 2 8932417
Hotline	+ 88 01755661212, 16517
Sales	+880 173007 1011-19
Email	sales@divineit.net
Support	support@divineit.net





DIVINE IT LIMITED

Customer Commitment Technology

 16517

office@divineit.net 



+88017 5566 1212
+88017 3007 1033

Head Office

F. Haque Tower (Level 7)
107, Bir Uttam C.R Datta Road
Dhaka-1205, Bangladesh

STP

H 29 (Level 5), Road 12
Sector 10, Uttara
Dhaka-1230, Bangladesh

Business Enquiries

Tel: +880 2 55085054, +880 2 55085470
Fax: +880 2 8932417, Cell: +88 017 30071011-19
Email: sales@divineit.net, office@divineit.net